A background image showing a woman and a man in a professional setting, looking at a computer monitor. The woman is pointing at the screen while the man looks on. The scene is brightly lit, suggesting an office or meeting room.

**TEST AUTOMATION USING  
ANALYTICS, ROBOTICS  
&  
MICROCONTROLLERS**

# Software Test Automation Trends



Gartner

*"By 2021, 50% of enterprises will leverage intelligent test automation driven by AI and machine learning."*



SAUCE LABS

*"56% do as much or more automated as manual testing, a minor decrease from 59% (2017) and 60% (2016)."*



FORRESTER

*"Automating 80% is the goal but 14% of the customer references are at that level"*



Gartner

*"By 2023, 75% of IoT system integrators will have added comprehensive end-to-end IoT solution testing services to their portfolios, up from 30% today"*



WORLD QUALITY REPORT

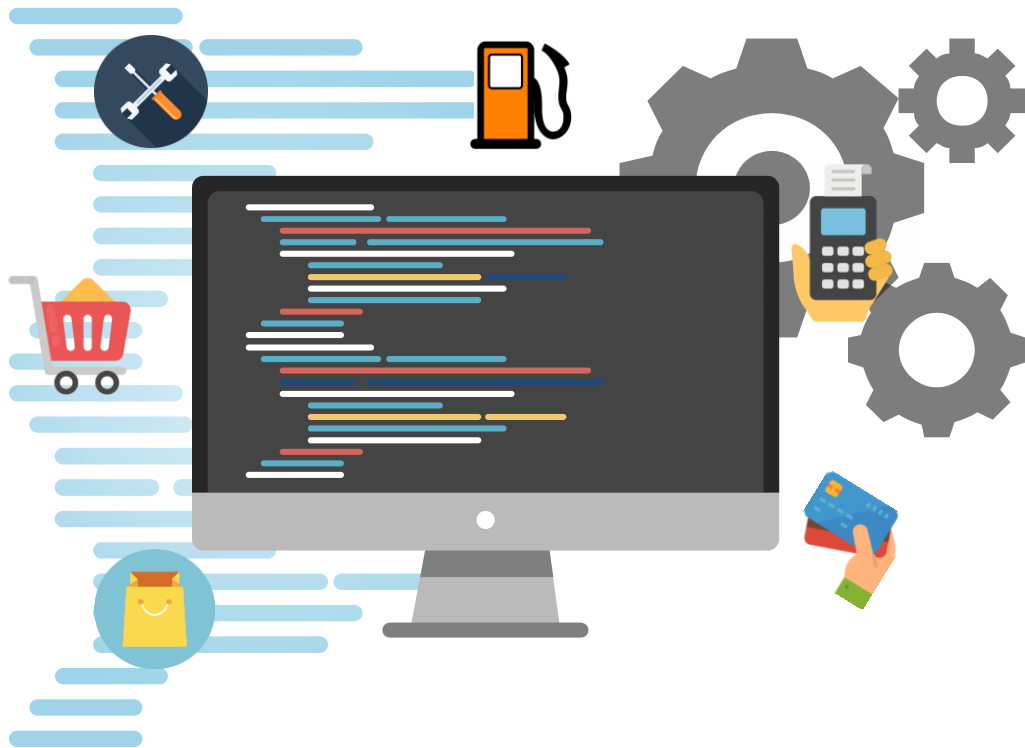
*"Organizations are unable to tap the full benefits of Agile/Devops due to low levels of automation and challenges with test data/test environment"*



WORLD QUALITY REPORT

*"42% of the CPRD customers do not have the right set of tools for testing"*

# There are multiple types of hardware to deal with...



# There are varying flavors of POS software...



**TOSHIBA**

PCMS



**WINCOR**  

---

**NIXDORF**



***Retalix***

# End to End Workflows using each hardware involves multiple Hardware Components



**Debit Readers**



**Receipt Printers**



**Scanner Scale**



**Barcode Scanners**

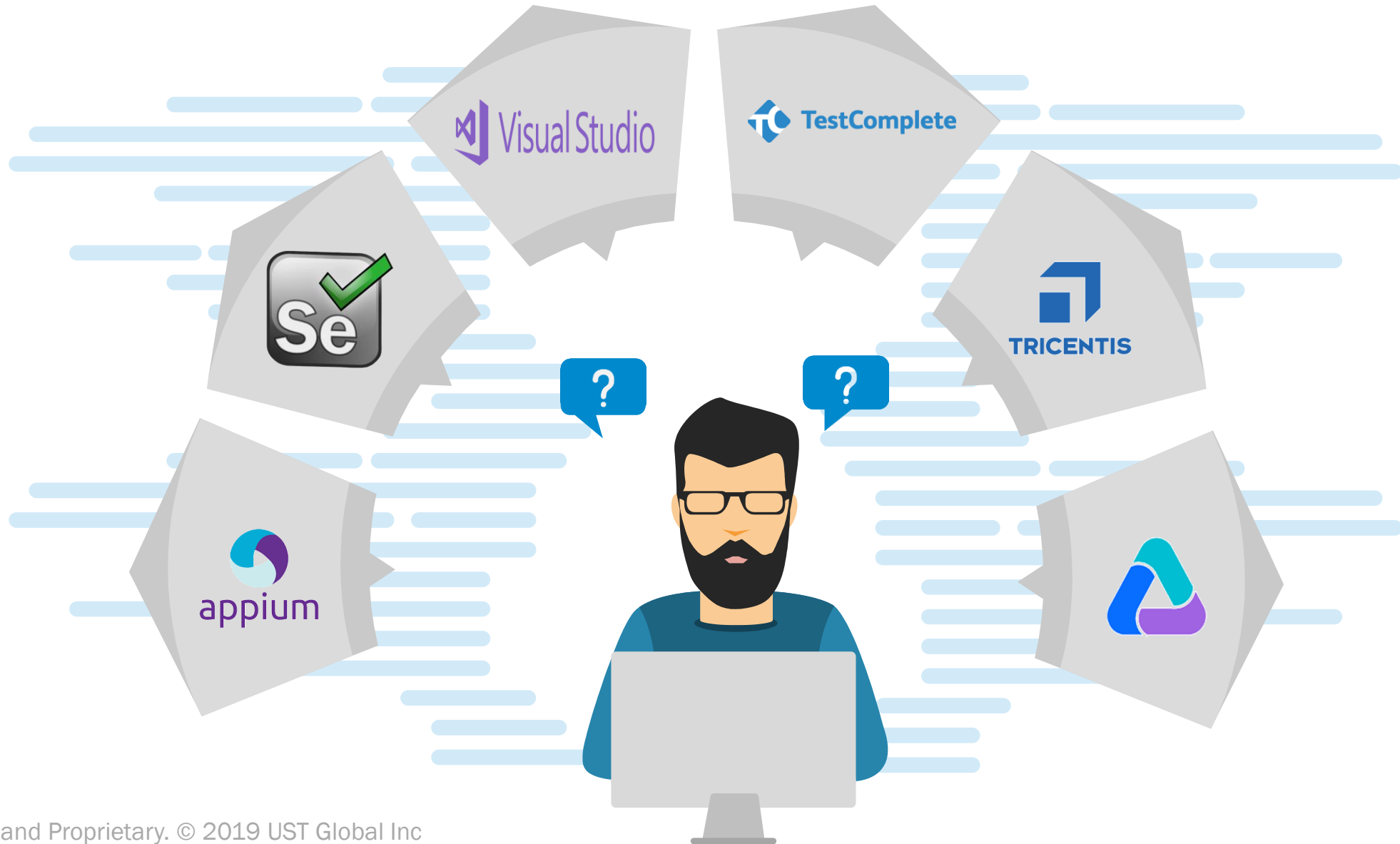


**Customer Pole Display**



**Handheld scanners**

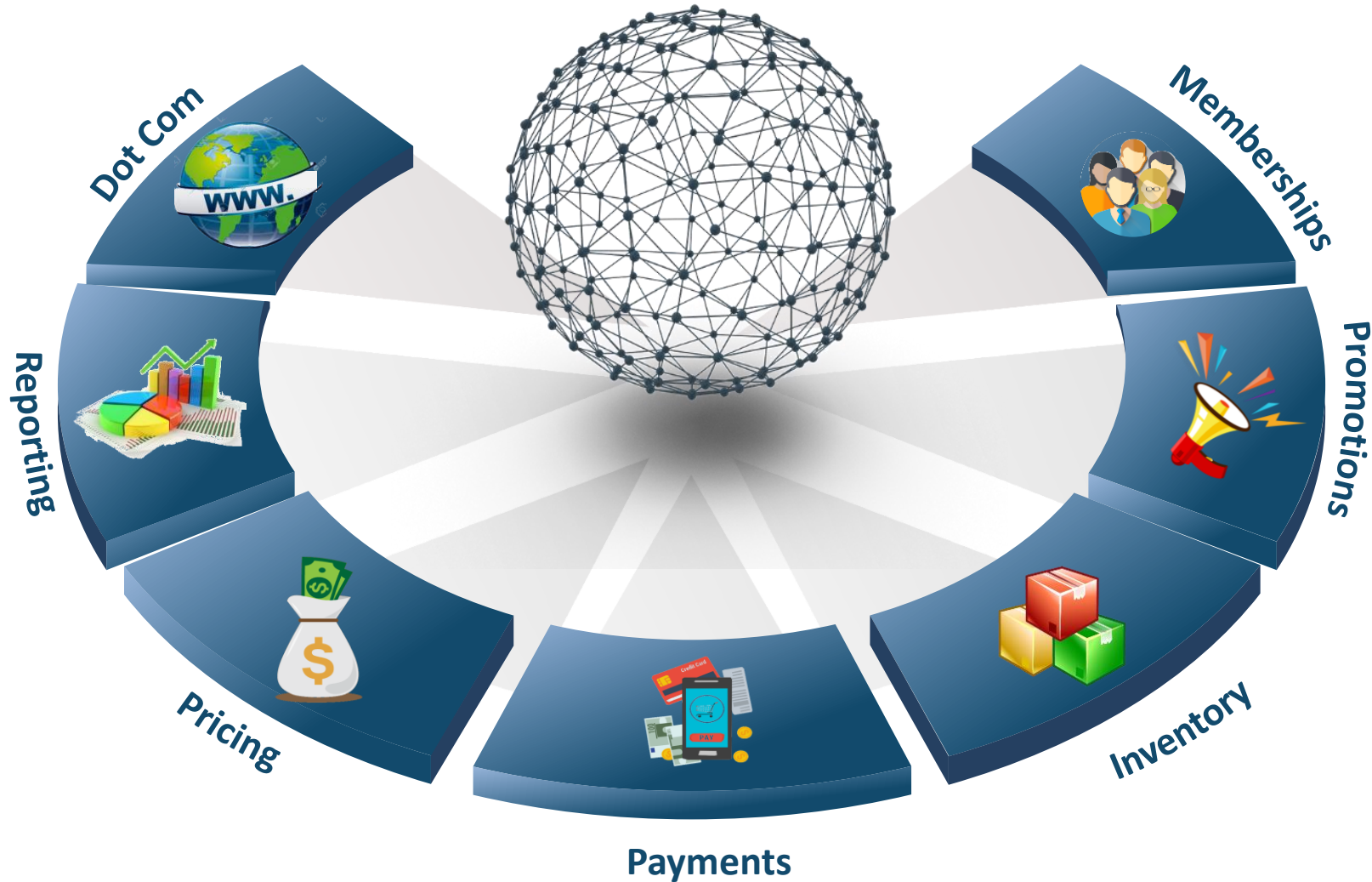
# Lack of Support for Automation Tools – Popular tools does not help Automate POS



# Testing should be aligned with Real World Scenarios

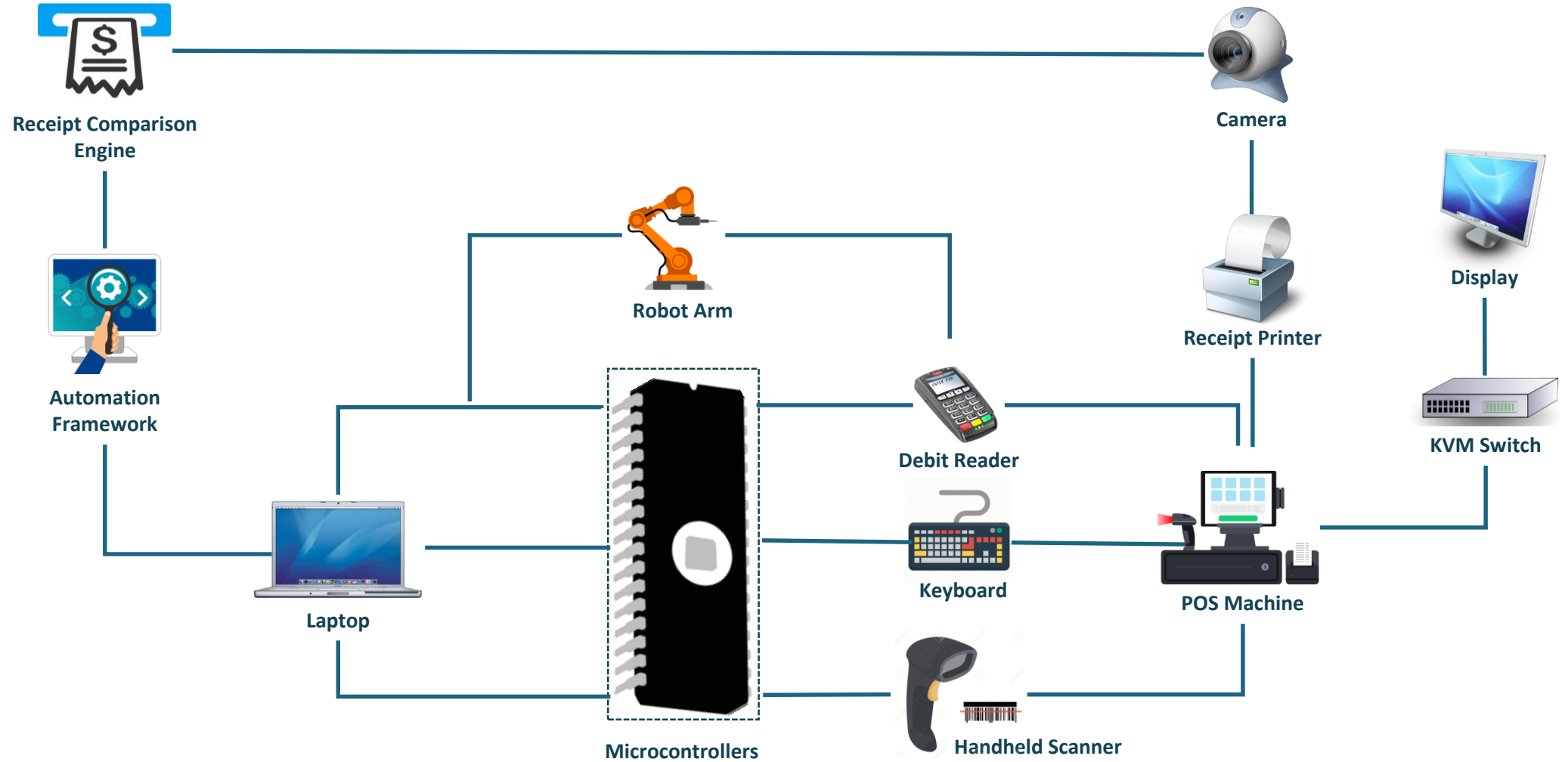


# POS has numerous Interfaces with In-House & 3rd Party Systems





# Building blocks of POS Test Automation Solution



# OCR based Test Automation Tools are best suited for POS Automation



## OPTICAL CHARACTER RECOGNITION



# Microcontrollers for triggering events & KVM switches for event transmission



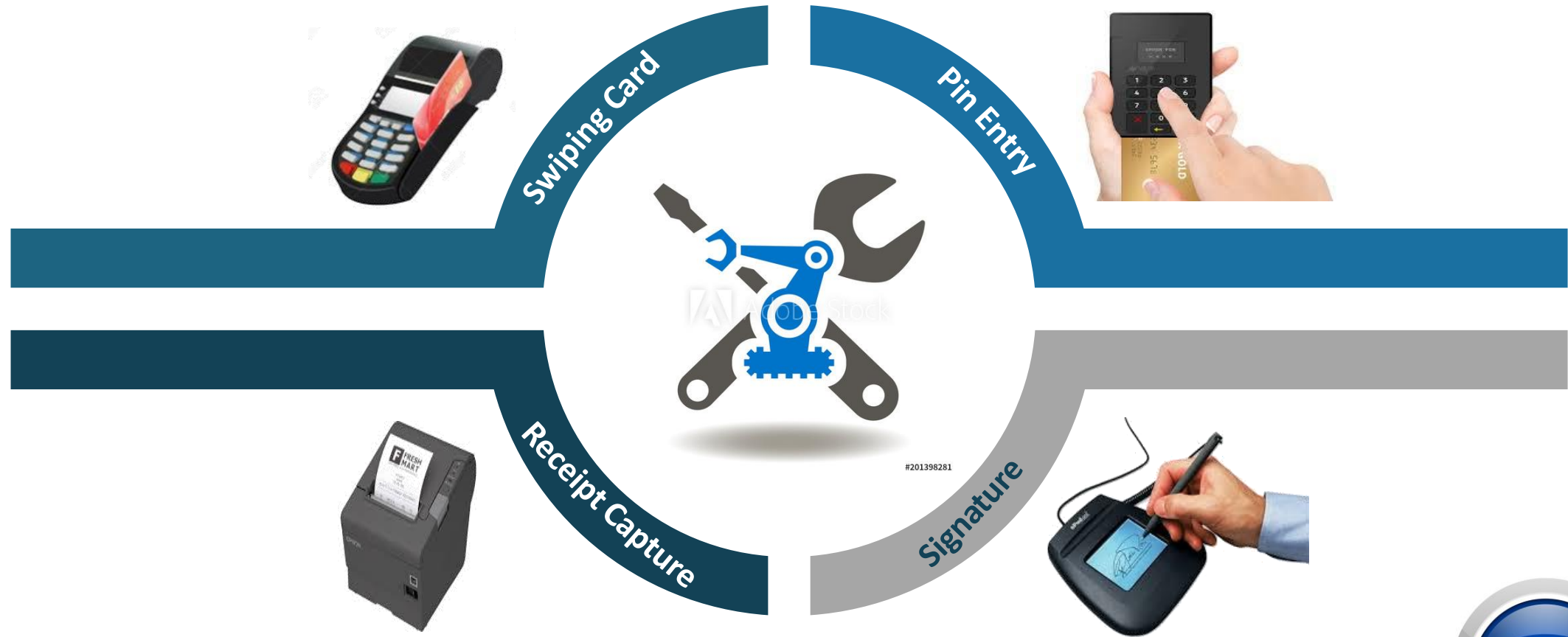
KVM Switch to transmit events  
and replay screen updates to/from  
POS registers



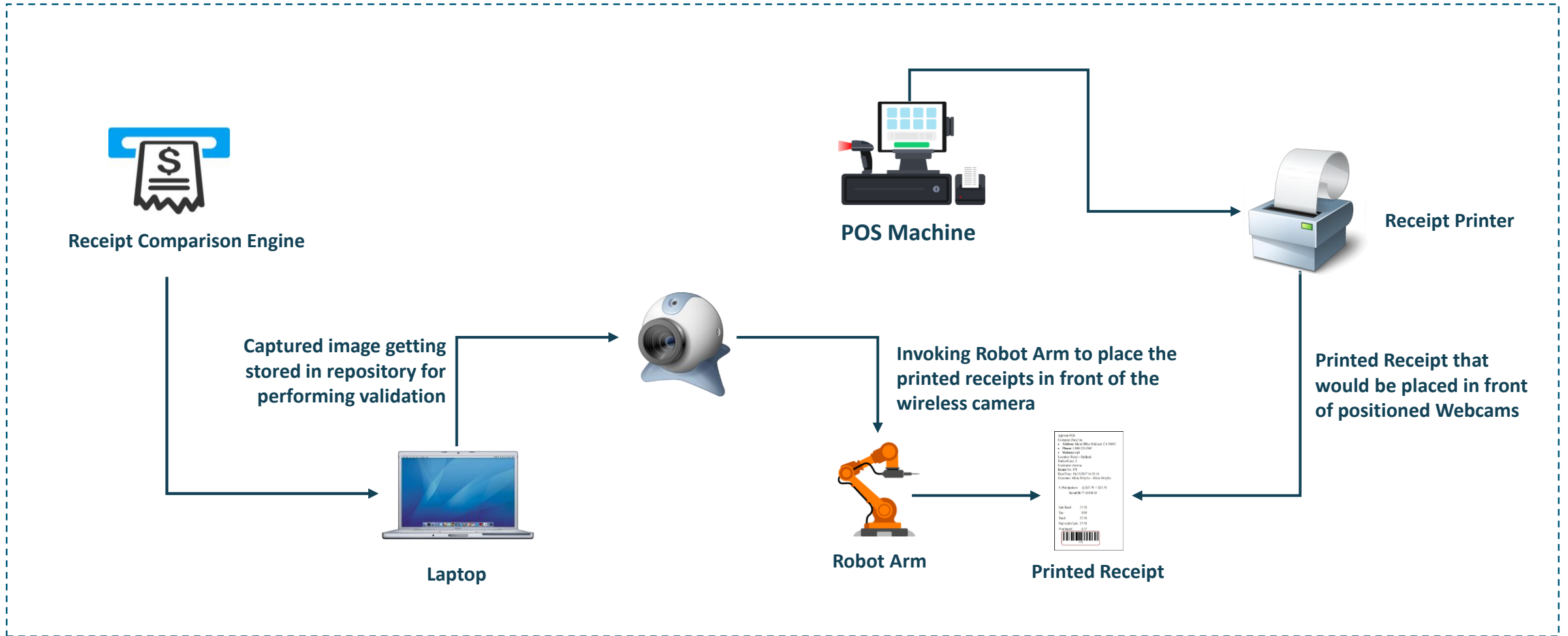
Commands are sent to the Arduino  
microcontroller to

- Mimic Keyboard Strokes
- Trigger Barcode scanner

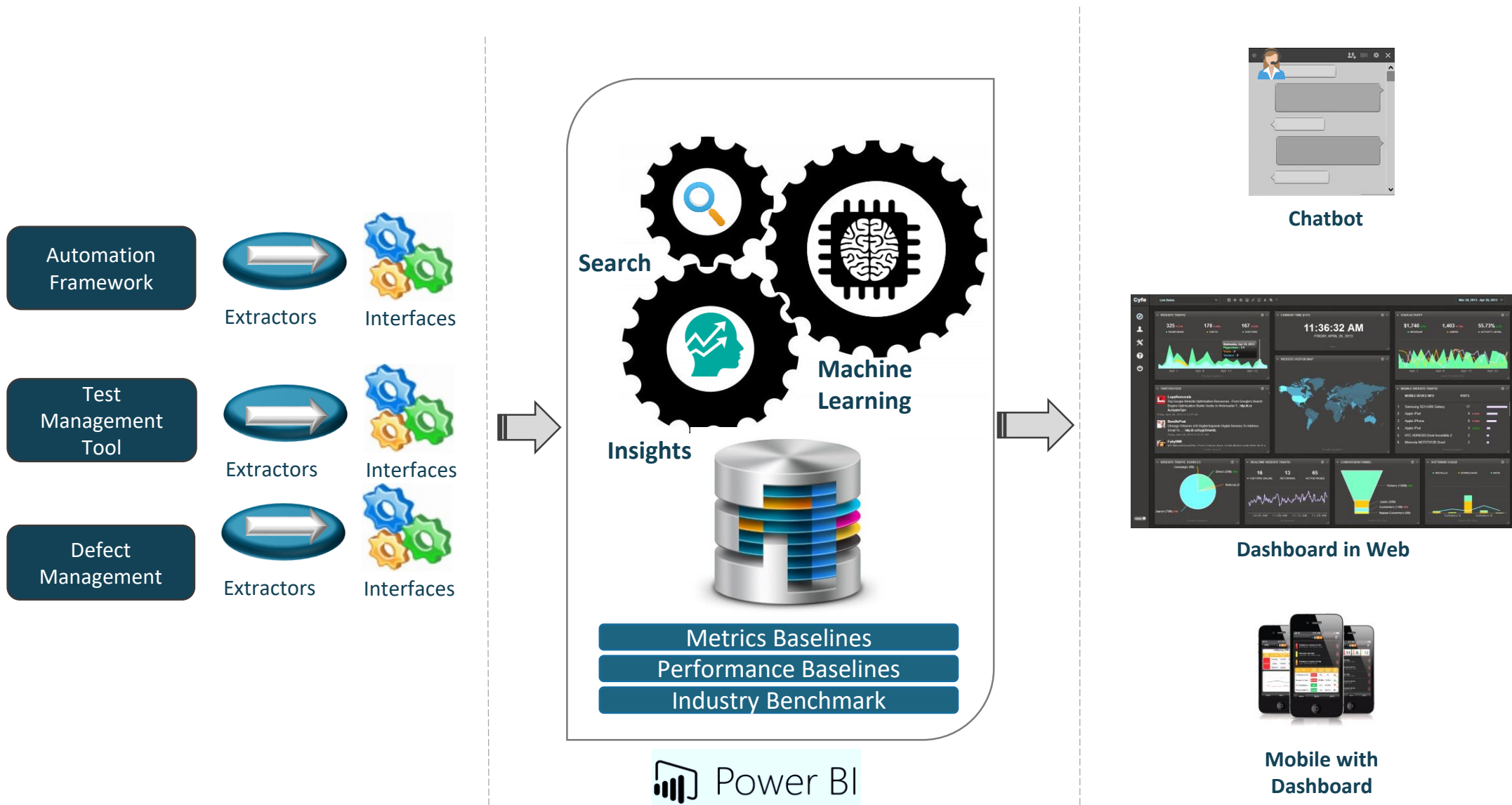
# Robotic Arms for Capturing Receipts & performing actions on Debit Reader



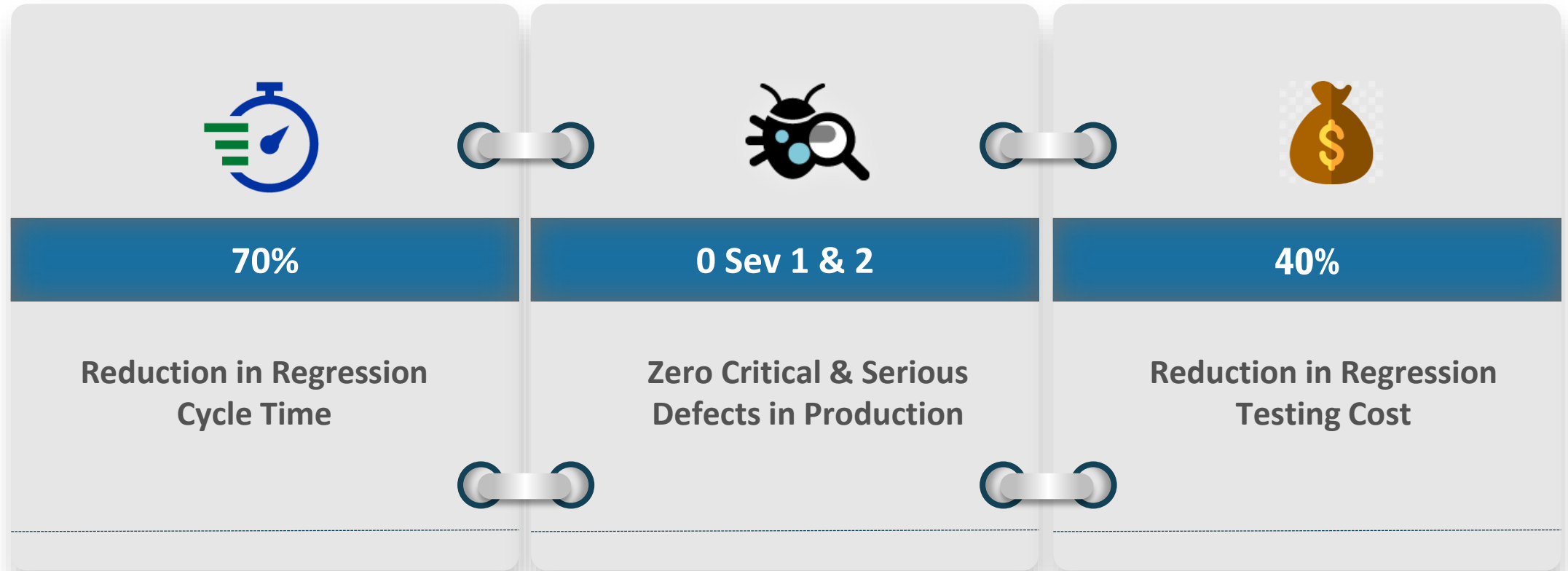
# Automated validation of receipt using computer vision API's



# Test Reporting Platform with predictive analytics for Real Time Status Reporting



# Automation helps to improve Consumer Experience & Speed to Market







**THANK YOU**